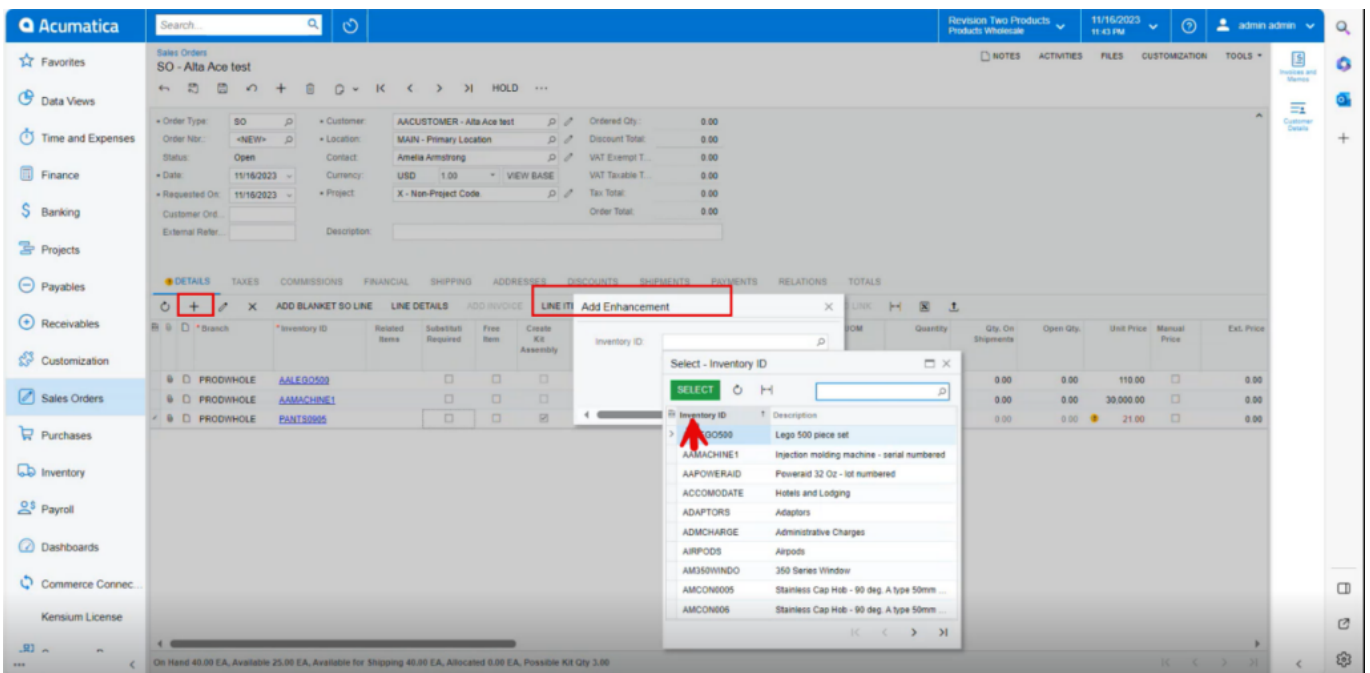


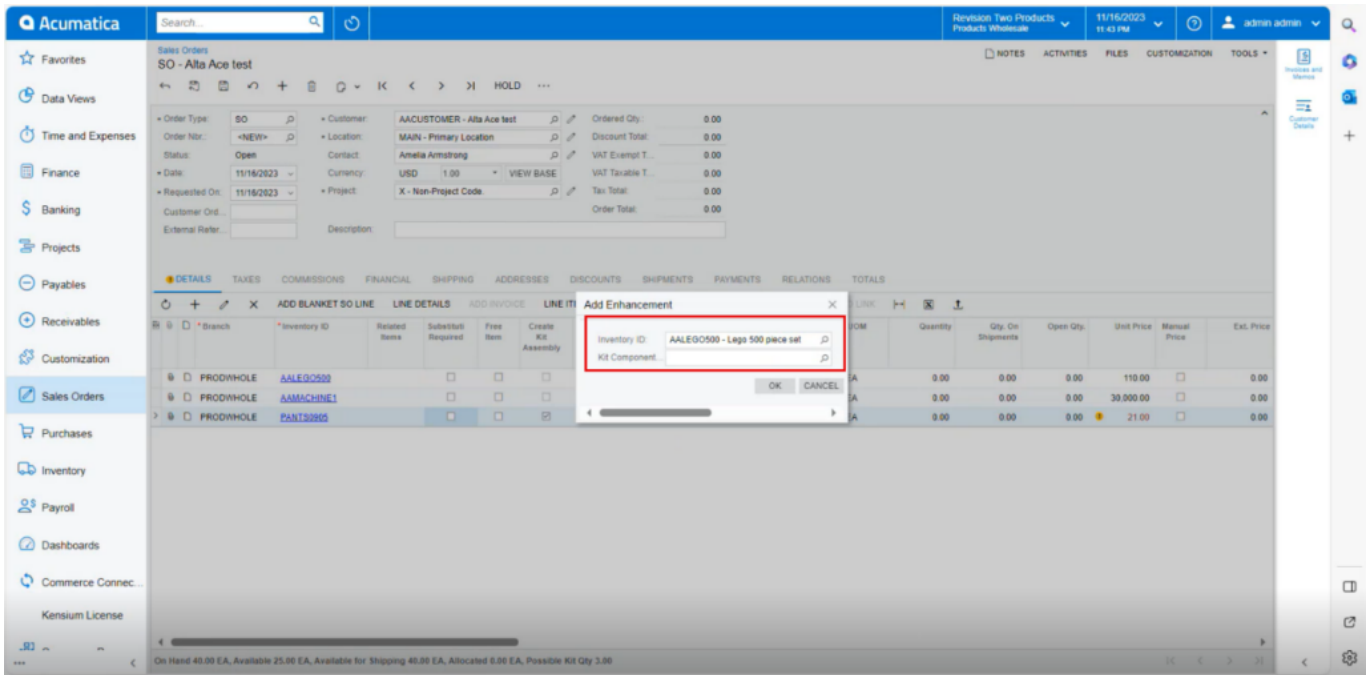
Syncing Kit Specifications to sales orders

- ✘ You need to search for **[Customer]**.
- Click on **[+]** icon under **[Details]** and search for the created **[Kit Specifications]**.
- Click on **[Line-Item Enhancement]**.
- A pop-up will appear with **[Add Enhancement]** then search for **[Inventory ID]** from the options and click on **[Select]**.



Kit Specifications(1)

- Upon selecting the Inventory ID, a new line **[kit Component ID]** will appear on the screen with kit components.

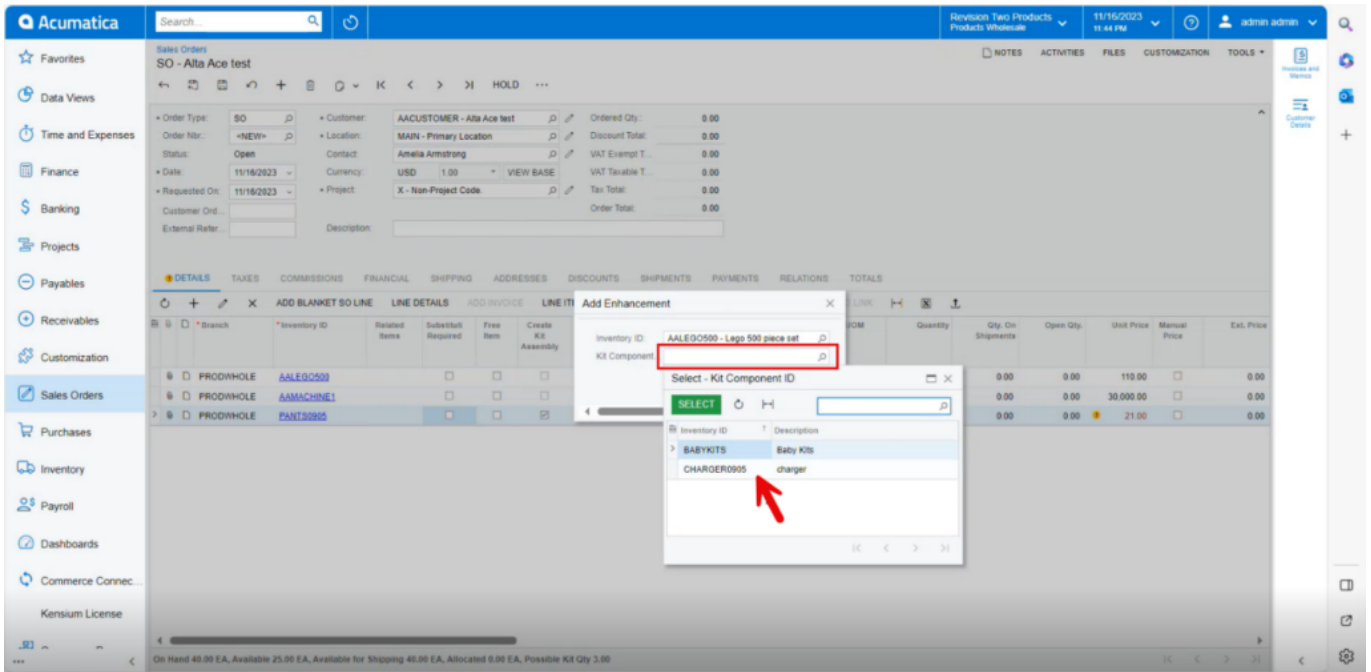


The screenshot shows the Acumatica interface for a sales order. The 'Add Enhancement' dialog box is open, and the 'Inventory ID' field is highlighted with a red box. The 'KI Component' field is also visible. Below the dialog box, a table displays the following data:

Quantity	Qty. On Shipments	Open Qty.	Unit Price	Manual Price	Ext. Price
0.00	0.00	0.00	110.00		0.00
0.00	0.00	0.00	30,000.00		0.00
0.00	0.00	0.00	21.00		0.00

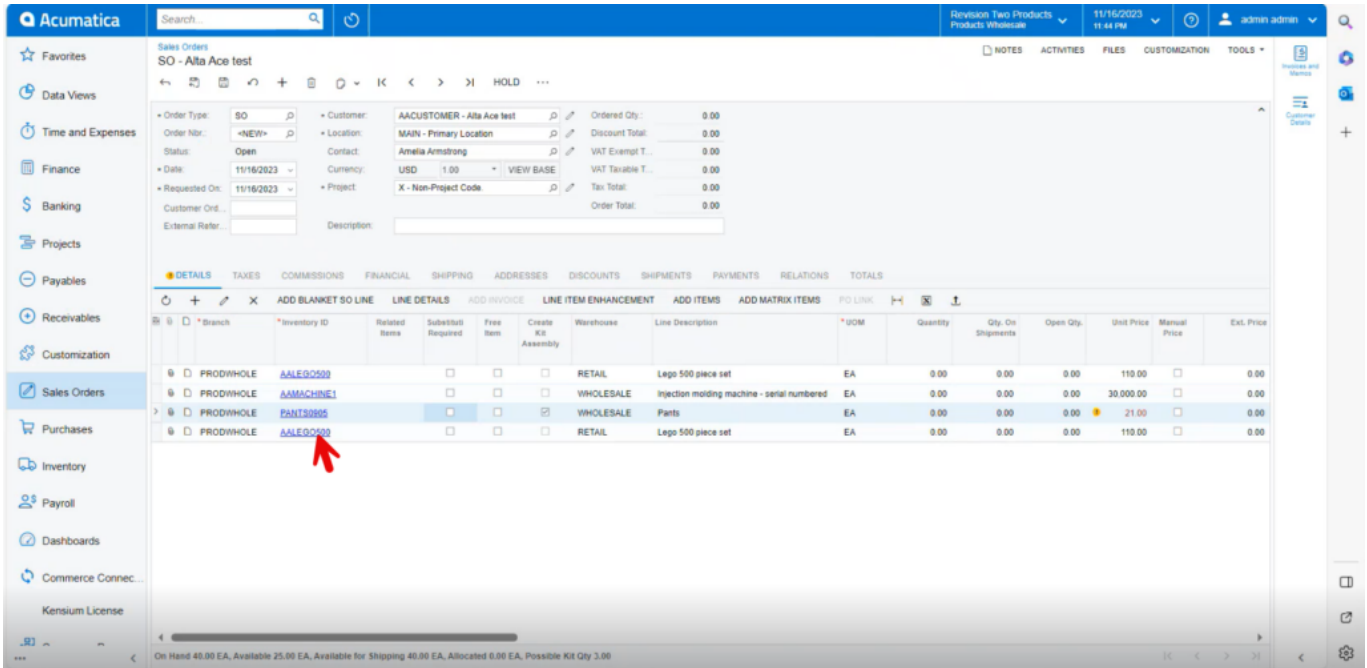
Kit Specifications(2)

- Select the **[Kit Component ID]** which you have created in Kit specifications.
- Click on **[Ok]**.



Kit Specifications(3)

- The new line item will be added below the parent item with **[Associated SKU ID]**.

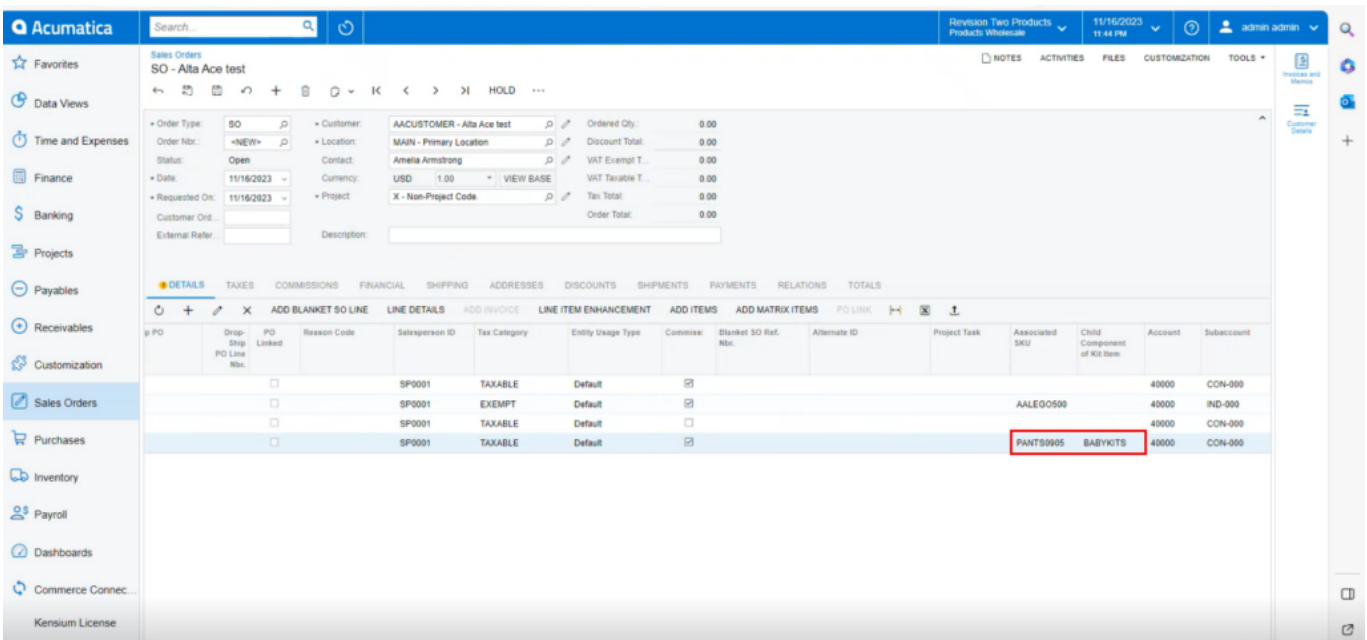


SO - Alta Ace test

PO	Branch	Inventory ID	Related Items	Substituted Required	Free Item	Create Kit Assembly	Warehouse	Line Description	UOM	Quantity	Qty. On Shipments	Open Qty.	Unit Price	Manual Price	Ext. Price
		AALE00500					RETAIL	Lego 500 piece set	EA	0.00	0.00	0.00	110.00		0.00
		AMMACHINE1					WHOLESALE	Injection molding machine - serial numbered	EA	0.00	0.00	0.00	30,000.00		0.00
		PANTS0905					WHOLESALE	Pants	EA	0.00	0.00	0.00	21.00		0.00
		AALE00500					RETAIL	Lego 500 piece set	EA	0.00	0.00	0.00	110.00		0.00

New Line Item

- The Selected Components items will be displayed under **[Child Component of Kit Item].**



SO - Alta Ace test

PO	Drop-Ship PO Line No.	PD Linked	Reason Code	Salesperson ID	Tax Category	Entry Usage Type	Commiss	Blanket SO Ref. Nbr.	Alternate ID	Project Task	Associated SKU	Child Component of Kit Item	Account	Subaccount
				SP0001	TAXABLE	Default	<input checked="" type="checkbox"/>						40000	CON-000
				SP0001	EXEMPT	Default	<input checked="" type="checkbox"/>				AALE00500		40000	IND-000
				SP0001	TAXABLE	Default	<input type="checkbox"/>						40000	CON-000
				SP0001	TAXABLE	Default	<input checked="" type="checkbox"/>				PANTS0905	BABYKITS	40000	CON-000

Associated SKU & Child Component of Kit item

