
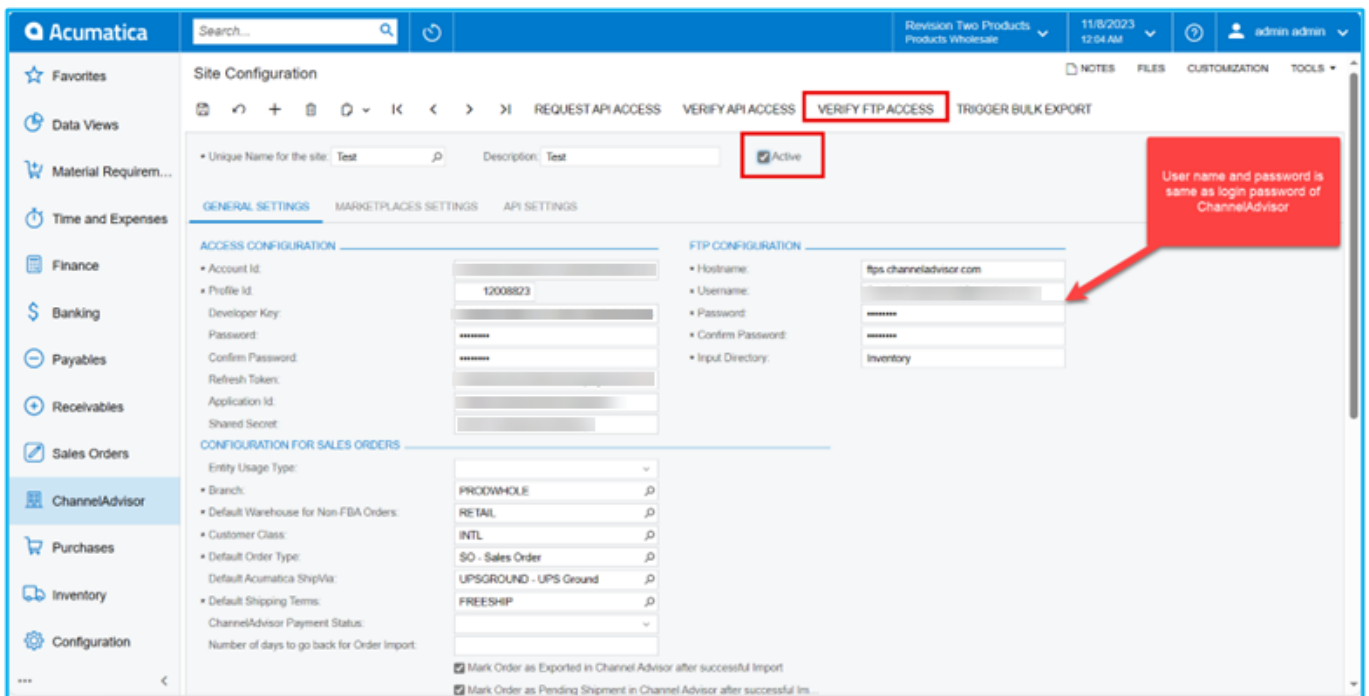


FTP Configuration

 You have an FTP configuration, so when the products are created or updated inside of Acumatica you can send the products into Rithum Connector using the FTP approach.

- Before verifying the **[FTP Access]**, you need to enter the field details in **[FTP Configuration]** which are mandatory.
 - Host name
 - Username
 - Password
 - Confirm Password
 - Input Delivery
- The Username, Password, Confirm Password should be same as **[Login credentials of Rithum Connector]**, Input delivery should be **[Inventory]**.

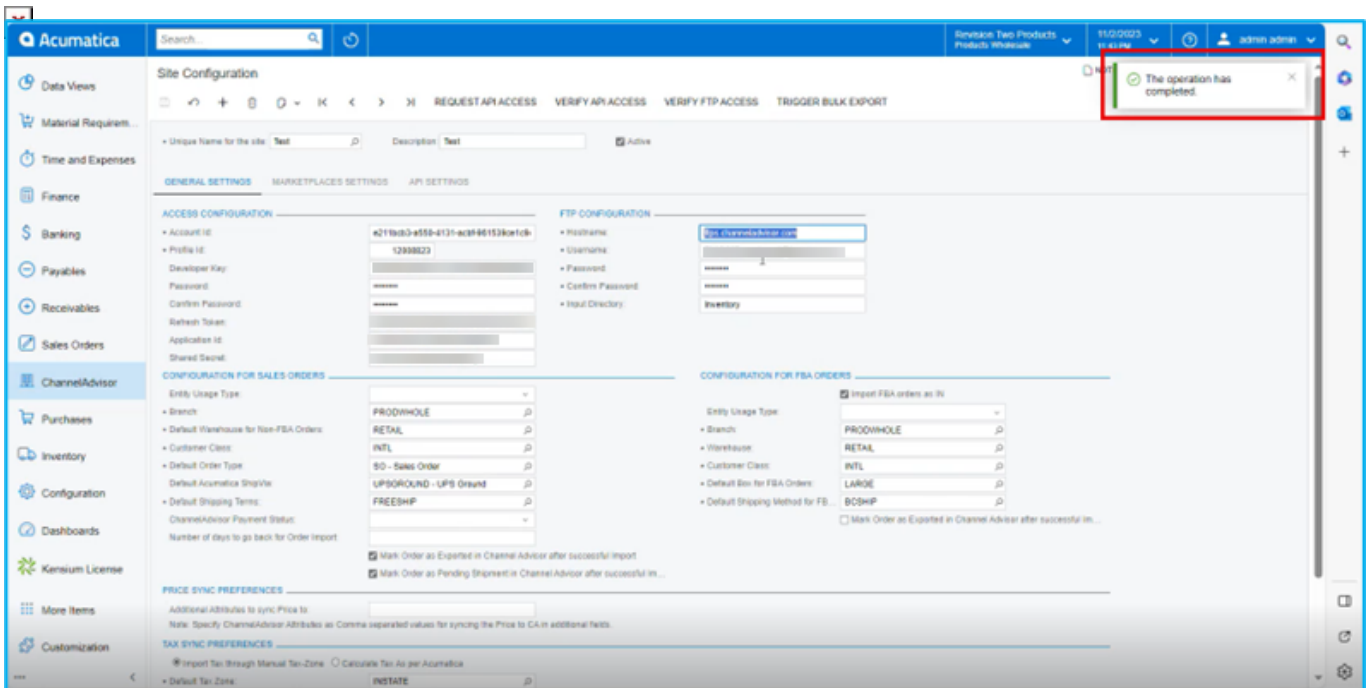


The screenshot shows the Acumatica interface for Site Configuration. The 'FTP CONFIGURATION' section is highlighted. A red box highlights the 'Active' checkbox, which is checked. A red callout box points to the 'Username' and 'Password' fields, stating: 'User name and password is same as login password of ChannelAdvisor'. The 'Hostname' is set to 'ftp.channeladvisor.com' and the 'Input Directory' is set to 'Inventory'. Other fields like 'Account Id', 'Profile Id', and 'Developer Key' are also visible.

FTP Configuration

- You must enable the **[Active]** check box.
- Click on **[Save]** to save the site configuration.
- Click on **[Verify FTP Access]**.

- A pop-up will appear on the top right-hand corner on the screen confirming **[The Operation has Completed]**.



Operation Completed

All this data that comes with the various product counts will be visible to you. All these arrive with the product information. As a result, whenever a product is updated, produced, and designated for CA, it enters Channel Advisor Connector via the FTP method, and you will see the file or listing appear here.

Home Products Sell Fulfill Marketing Help Account BrownBox

Dashboard Channel Health Reports Imports/Exports Search

Imports/Exports Product Data Orders File Export Center

Custom Columns OFF Edit Reset Import

Type	Source	Template	Description	Filename	Submitted (CT)	Imported By	Status	Product Count	Duration
<input type="checkbox"/>	All	All	Starts With	Starts With	Starts With	From... To...	All	From... To...	
<input type="checkbox"/>	Inventory Import. All	FTP			08ca55d030f04686a877eb0d3b3c7701.txt	11/21/2022 7:28 AM	Complete	142	1 minute
<input type="checkbox"/>	Inventory Import. All	FTP			15b588dc63d84bd7b0cc5c92d7bec9f0.txt	11/21/2022 7:28 AM	Complete	2	1 minute
<input type="checkbox"/>	Inventory Import. All	FTP			c50d9af19c374f1ab827c007dc0e335b.txt	11/21/2022 7:28 AM	Complete	141	1 minute
<input type="checkbox"/>	Inventory Import. All	FTP			1bf1335e271141ca5d1db0fe02b300.txt	11/21/2022 7:13 AM	Complete	141	1 minute
<input type="checkbox"/>	Inventory Import. All	FTP			98a40bb6396c431bb4b948b042853766.txt	11/21/2022 6:58 AM	Complete	141	1 minute
<input type="checkbox"/>	Inventory Import. All	FTP			7227198da0024f7e667220a7ef29dfdc.txt	11/21/2022 6:58 AM	Complete	141	1 minute
<input type="checkbox"/>	Inventory Import. All	FTP			c40b23668b54bea86baab600e94461.txt	11/21/2022 6:43 AM	Complete	141	1 minute
<input type="checkbox"/>	Inventory Import. All	FTP			fcaeaacc03244a63b404d3bfe810db92.txt	11/21/2022 6:38 AM	Complete	141	1 minute
<input type="checkbox"/>	Inventory Import. All	FTP			0ae4a436ea742e5afeca4ccc6298d38.txt	11/21/2022 6:33 AM	Complete	141	1 minute
<input type="checkbox"/>	Inventory Import. All	FTP			7257d25144d4117b7a20af49864bae4.txt	11/21/2022 6:33 AM	Complete	141	1 minute
<input type="checkbox"/>	Inventory Import. All	FTP			1f558b8f9264c7ab6c39f6114ef9c4.txt	11/21/2022 6:18 AM	Complete	141	1 minute
<input type="checkbox"/>	Inventory Import. All	FTP			e0514983569e45b58d992a698de534f9.txt	11/21/2022 6:18 AM	Complete	141	1 minute
<input type="checkbox"/>	Inventory Import. All	FTP			ac69f06d0349c6bb0d9a35d47c1f.txt	11/21/2022 6:08 AM	Complete	141	1 minute
<input type="checkbox"/>	Inventory Import. All	FTP			4da5e06c7de446d5a8c117e55d981c6f.txt	11/21/2022 6:03 AM	Complete	141	1 minute
<input type="checkbox"/>	Inventory Import. All	FTP			91f41777b0e84545b4c94d520c8d204a.txt	11/21/2022 5:53 AM	Complete	141	1 minute
<input type="checkbox"/>	Inventory Import. All	FTP			af58ebb9eed944d2ac5c7ba7d9494b84.txt	11/21/2022 5:48 AM	Complete	141	1 minute
<input type="checkbox"/>	Inventory Import. All	FTP			8cc1def01d434347aacd1a61527d49fb.txt	11/21/2022 5:33 AM	Complete	141	1 minute
<input type="checkbox"/>	Inventory Import. All	FTP			28533bd4190c4c09b74fd492e61bdc26.txt	11/21/2022 5:33 AM	Complete	141	1 minute
<input type="checkbox"/>	Inventory Import. All	FTP			feac86d703014138b6952353588e9e.txt	11/21/2022 5:23 AM	Complete	141	1 minute
<input type="checkbox"/>	Inventory Import. All	FTP			22c5b39730464c0184b175d3061fac9.txt	11/21/2022 5:23 AM	Complete	141	1 minute
<input type="checkbox"/>	Inventory Import. All	FTP			1d738db56d2648b9b9ca2410a1d04777.txt	11/21/2022 5:08 AM	Complete	141	1 minute
<input type="checkbox"/>	Inventory Import. All	FTP			2f07988942ad42cc8f036f5061ab2b.txt	11/21/2022 5:04 AM	Complete	141	1 minute

Page 1 of 17 (1,631 total) View 100 per page

FTP in CA