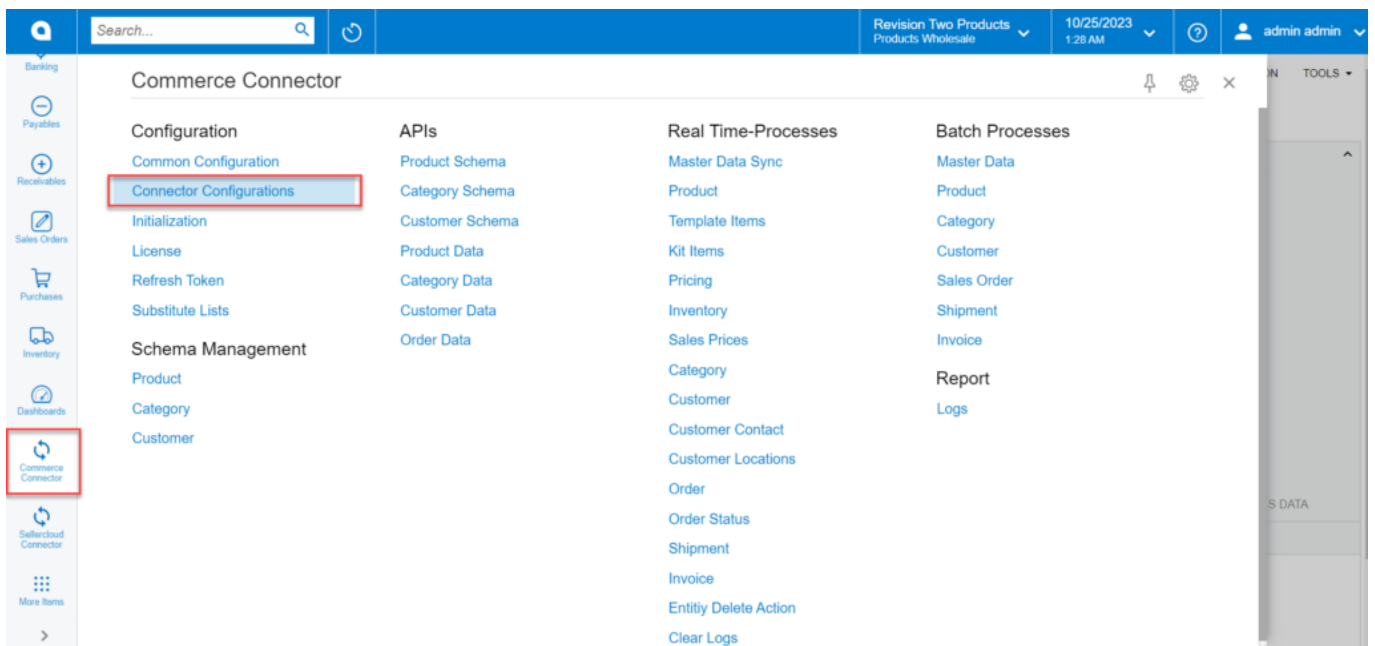


Connector Configuration

Connector configurations are referred to as, the settings and parameters used to integrate and sync data between Acumatica and other platforms.

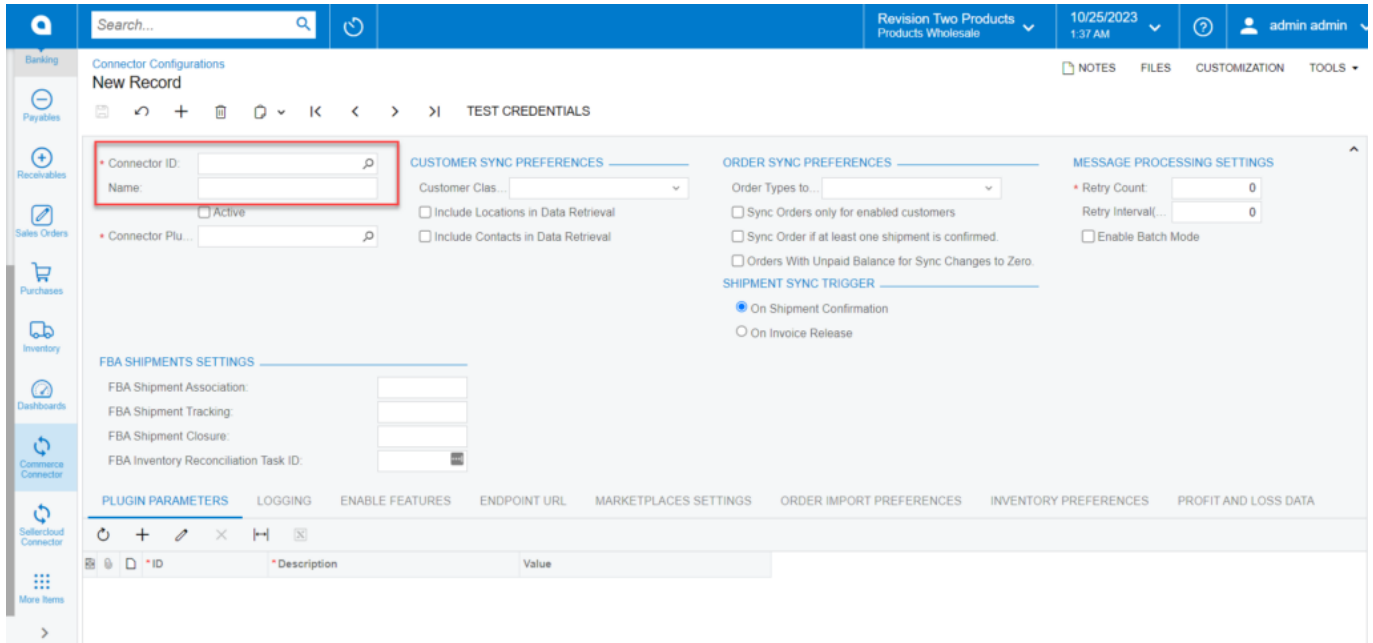
To configure the SellerCloud Connector first you need to set up the parameters of the connector.

- To access the **[Connector Configuration]**, navigate to the left panel in **[Acumatica]** and choose the option **[Connector Configurations]**.



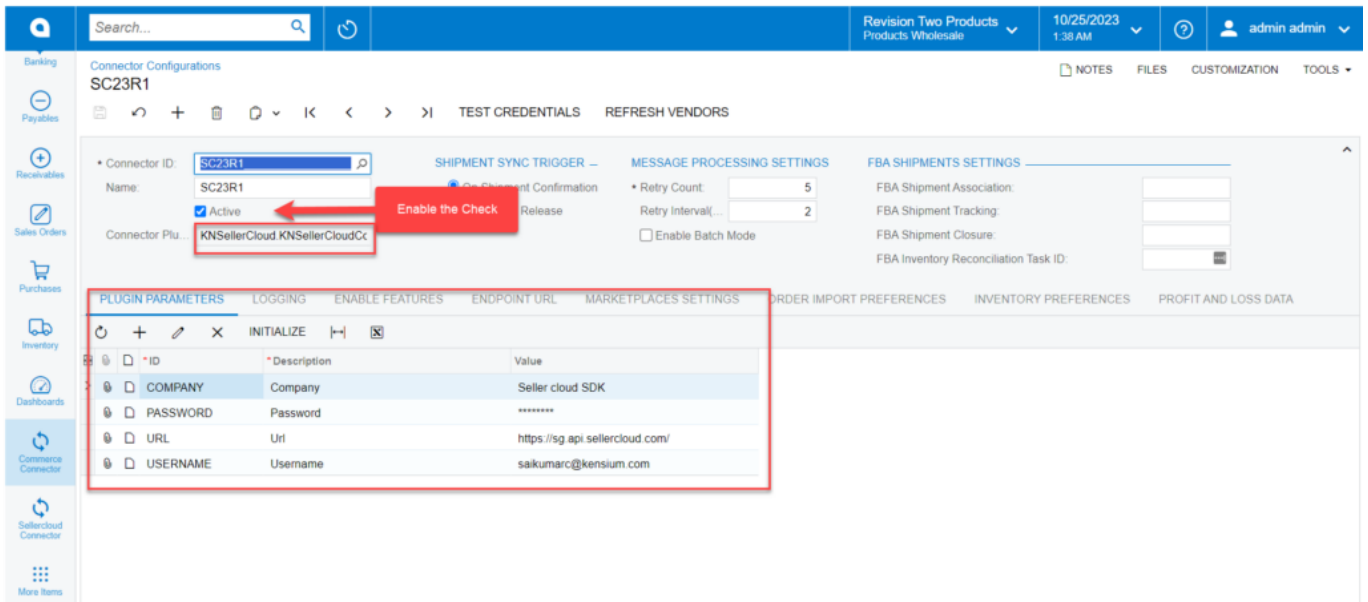
Commerce Connector

- You will be redirected to the Connector Configuration Screen.

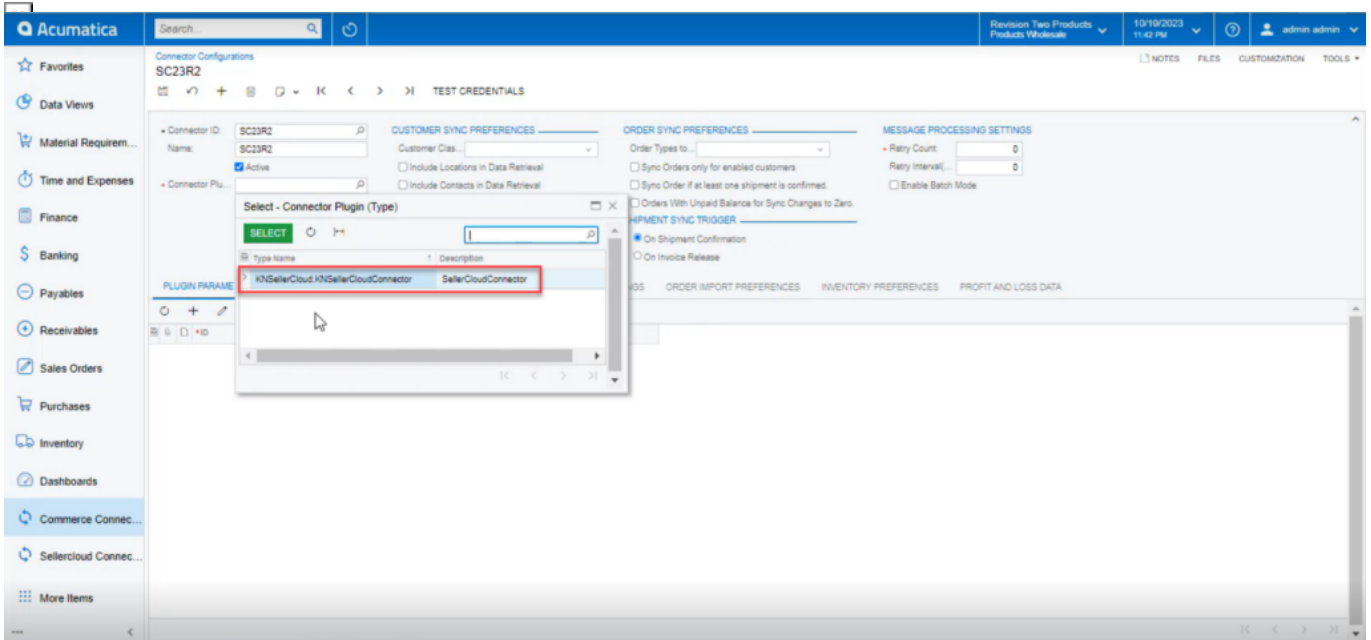


Connector Configuration Screen

- You can create [**Connector ID**] of the store or search for the existing store [**Customer ID**].
- Enter the name of the store.



Connector Configuration with Plugin Parameters



Connector Plugin

- You can search for the **[Connection plugin]** and select a package from the results; after the package is published, the Connector ID will automatically appear in the connector plugin tab.
- You must choose the SellerCloud (**KNSellerCloud Connector.KNSellerCloud Connector**) Connector plugin from the menu.