




KENSIUM

# Release Notes

## Kensium WMS 8.17.0

By Kensium Documentation Team

Version 8.17.0

 877-536-7486

 [info@kensium.com](mailto:info@kensium.com)

 [kensium.com](http://kensium.com)

# Table of Contents

Kensium WMS 8.17.0 .....	0
Release Notes Information .....	2
Acknowledgments.....	2
Notice .....	2
Version History .....	2
New Features and Enhancements.....	3
Batch Create Containers & Print .....	3
Primary Location added to Put away and Transfer on Handheld .....	6
New field on the Container Screen.....	9
Installation Changes.....	11
UI Changes.....	11
Zone Picking checkbox on the Warehouse Screen removed .....	11
Fusion Sales Order Preferences moved.....	11
Known Bugs and Issues Fixes.....	12

# Release Notes Information

Software Name	Fusion WMS
Version Number	8.17.0
Release Type (Initial/Minor/Intermediate/Major)	Intermediate
Compatible Acumatica Editions	Retail-Commerce <ul style="list-style-type: none"> <li>• 2021 R1</li> </ul>
Package Location	In SharePoint: Kensium Internal Products > Documents > Package Repository >

## Acknowledgments

Acumatica 2021 R1, R2, and Acumatica Commerce Edition are registered trademarks of Acumatica Inc. All Rights Reserved

Braintree is a service of PayPal. All Rights Reserved.

## Notice

The information contained in this document is subject to change without notice.

Kensium Solutions LLC shall not be liable for any errors or incidental or illegal acts in connection with the use of these release notes.

Reproduction, adaptation, or translation of this document is prohibited without prior written permission of Kensium Solutions, except as allowed under copyright laws. All Rights Reserved.

## Version History

Version Number	Description	Compiled By	Reviewed & Revised By	Approved By	Date
8.17.0	Documentation Team		Asha A		

# New Features and Enhancements

## Batch Create Containers & Print

We have introduced a Batch Create Containers & Print option in this version. By using this feature, you can create master pack and inner pack containers in bulk.

Upon clicking on the FusionWMS, you will be able to view the option of [Containers] under Transactions.

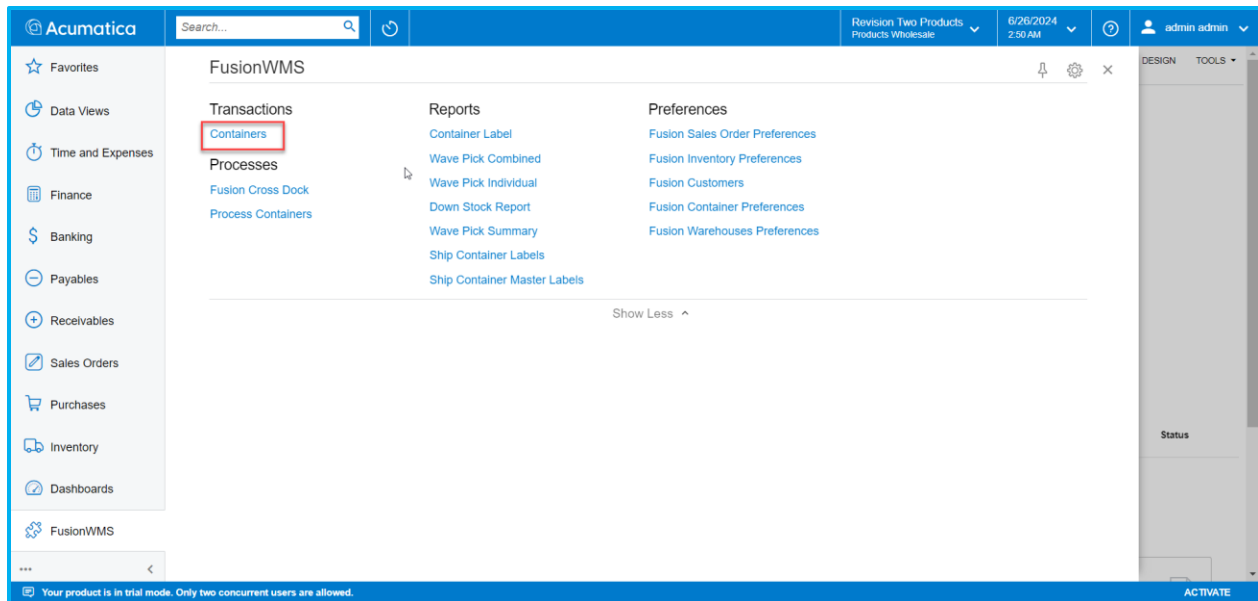


Figure: Containers option under Transactions

Upon opening the Containers screens, select the [Batch Create Containers & Print] as shown below.

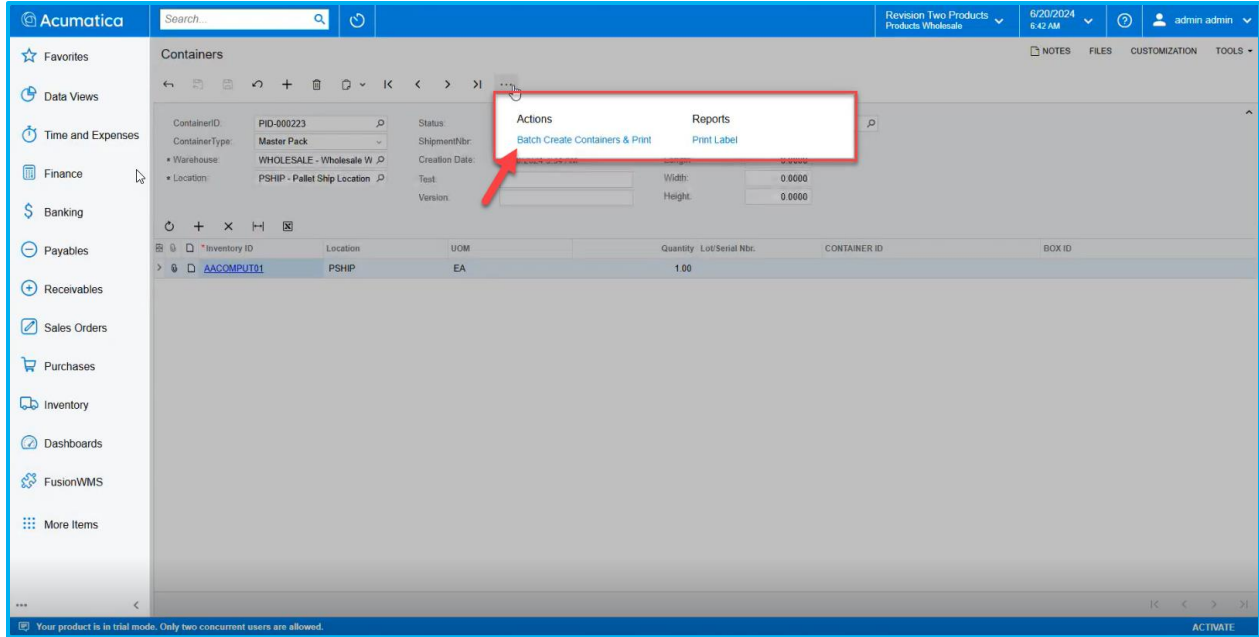


Figure: Batch Create Containers & Print

Upon clicking on the [Batch Create Containers & Print] a pop-up will appear on the screen as shown below.

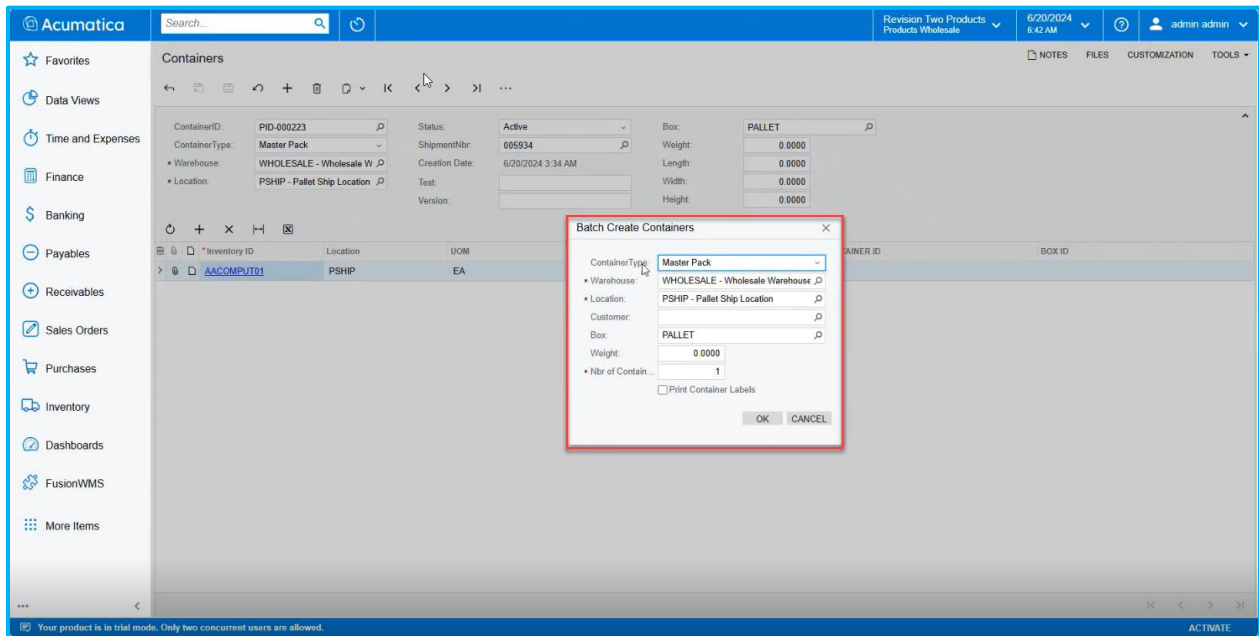
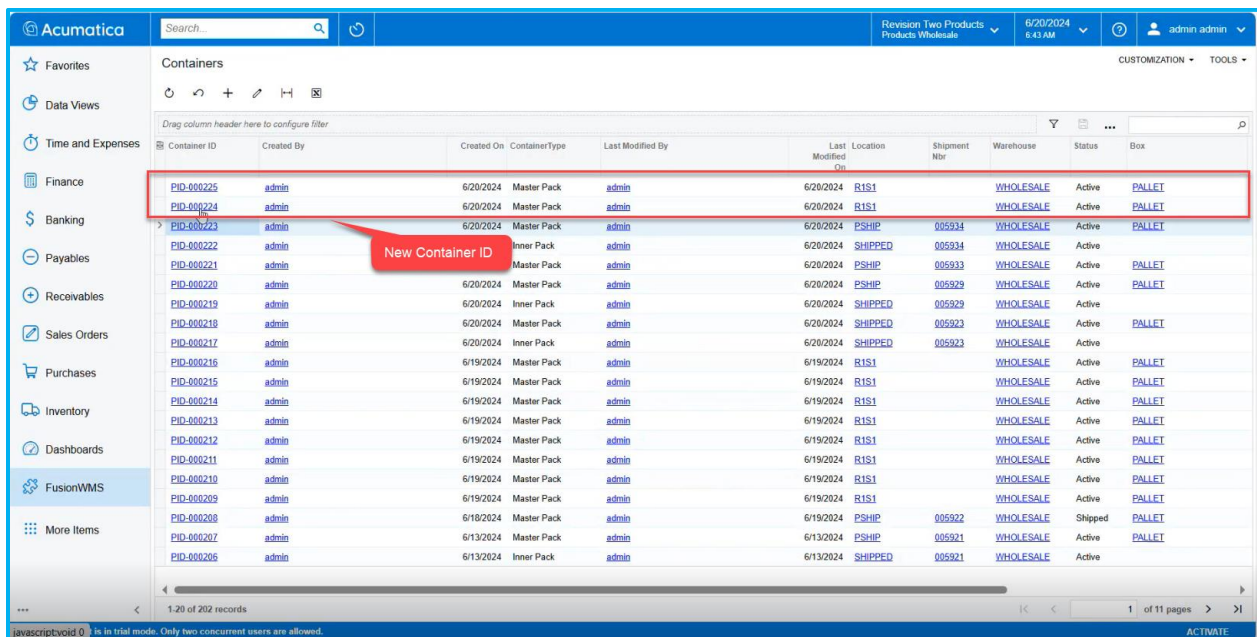


Figure: Batch Create Containers Pop-Up.

The pop-up includes the following:

- Container Type [Drop-down]: This includes the Master Pack or Inner Pack.
- Warehouse [Search Lookup]: You can select the warehouses which are active in the Warehouse screen.
- Location: [Search Lookup]: Select the Location ID.
- Customer [Search Lookup]: Select a Customer if desired..
- Box [Search lookup]: Select the type of box.
- Weight [Text Field]: Enter the weight of the Master pack or the Inner Pack based on selection if desired.
- Nbr. Of Container [Text Field]: Enter the number of containers you wish to create.
- Print Container label [Check box]: Check this if you want to print container IDs.

Navigate to the [Container] screen and you will view the newly created container's ID.



Container ID	Created By	Created On	ContainerType	Last Modified By	Last Modified On	Location	Shipment Nbr	Warehouse	Status	Box
PID-000225	admin	6/20/2024	Master Pack	admin	6/20/2024	R1S1		WHOLESALE	Active	PALLET
PID-000224	admin	6/20/2024	Master Pack	admin	6/20/2024	R1S1		WHOLESALE	Active	PALLET
PID-000223	admin	6/20/2024	Master Pack	admin	6/20/2024	PSHIP	005934	WHOLESALE	Active	PALLET
PID-000222	admin	6/20/2024	Inner Pack	admin	6/20/2024	SHIPPED	005934	WHOLESALE	Active	
PID-000221	admin	6/20/2024	Master Pack	admin	6/20/2024	PSHIP	005933	WHOLESALE	Active	PALLET
PID-000220	admin	6/20/2024	Master Pack	admin	6/20/2024	PSHIP	005929	WHOLESALE	Active	PALLET
PID-000219	admin	6/20/2024	Inner Pack	admin	6/20/2024	SHIPPED	005929	WHOLESALE	Active	
PID-000218	admin	6/20/2024	Master Pack	admin	6/20/2024	SHIPPED	005923	WHOLESALE	Active	PALLET
PID-000217	admin	6/20/2024	Inner Pack	admin	6/20/2024	SHIPPED	005923	WHOLESALE	Active	
PID-000216	admin	6/19/2024	Master Pack	admin	6/19/2024	R1S1		WHOLESALE	Active	PALLET
PID-000215	admin	6/19/2024	Master Pack	admin	6/19/2024	R1S1		WHOLESALE	Active	PALLET
PID-000214	admin	6/19/2024	Master Pack	admin	6/19/2024	R1S1		WHOLESALE	Active	PALLET
PID-000213	admin	6/19/2024	Master Pack	admin	6/19/2024	R1S1		WHOLESALE	Active	PALLET
PID-000212	admin	6/19/2024	Master Pack	admin	6/19/2024	R1S1		WHOLESALE	Active	PALLET
PID-000211	admin	6/19/2024	Master Pack	admin	6/19/2024	R1S1		WHOLESALE	Active	PALLET
PID-000210	admin	6/19/2024	Master Pack	admin	6/19/2024	R1S1		WHOLESALE	Active	PALLET
PID-000209	admin	6/19/2024	Master Pack	admin	6/19/2024	R1S1		WHOLESALE	Active	PALLET
PID-000208	admin	6/18/2024	Master Pack	admin	6/19/2024	PSHIP	005922	WHOLESALE	Shipped	PALLET
PID-000207	admin	6/13/2024	Master Pack	admin	6/13/2024	PSHIP	005921	WHOLESALE	Active	PALLET
PID-000206	admin	6/13/2024	Inner Pack	admin	6/13/2024	SHIPPED	005921	WHOLESALE	Active	

Figure: New Container ID on the Container Screen

**Print Container Label [Check-box]:**

**When this option is checked you will be able to view the labels of the container.**

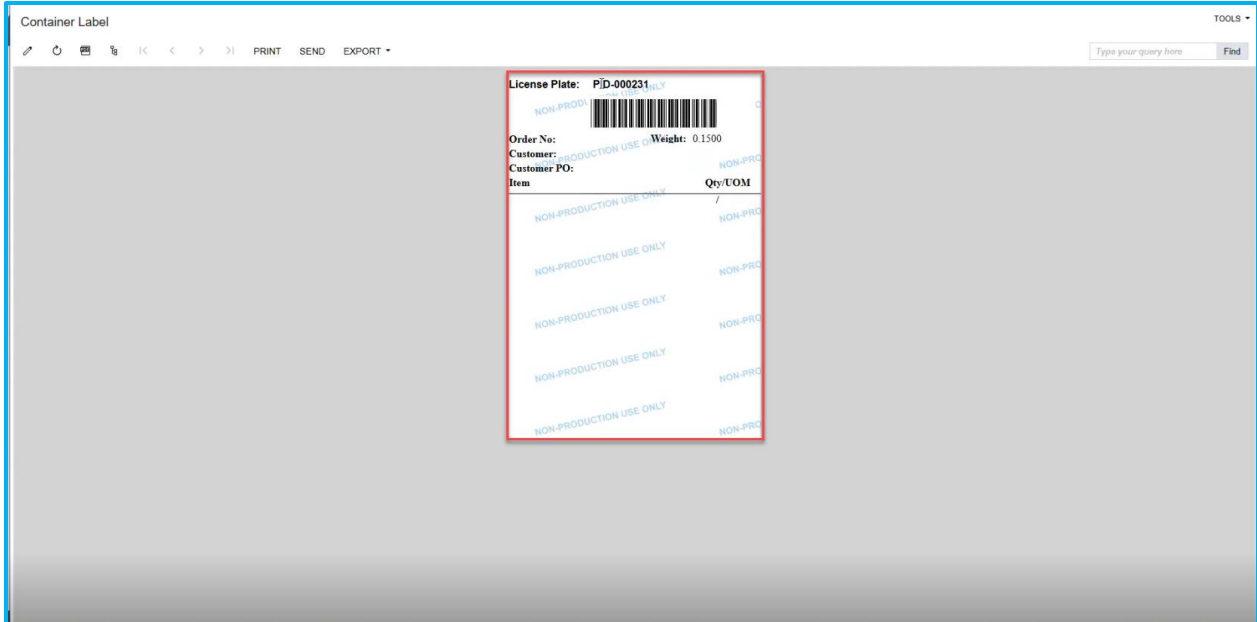


Figure: Container Label

## Primary Location added to Put away and Transfer on Handheld

The Primary Location] field added to the Item Warehouse Detail in WMS 8.16.0 has been added to the Put Away and Transfer functions on the handheld.

Figure: Click on Item Warehouse Details

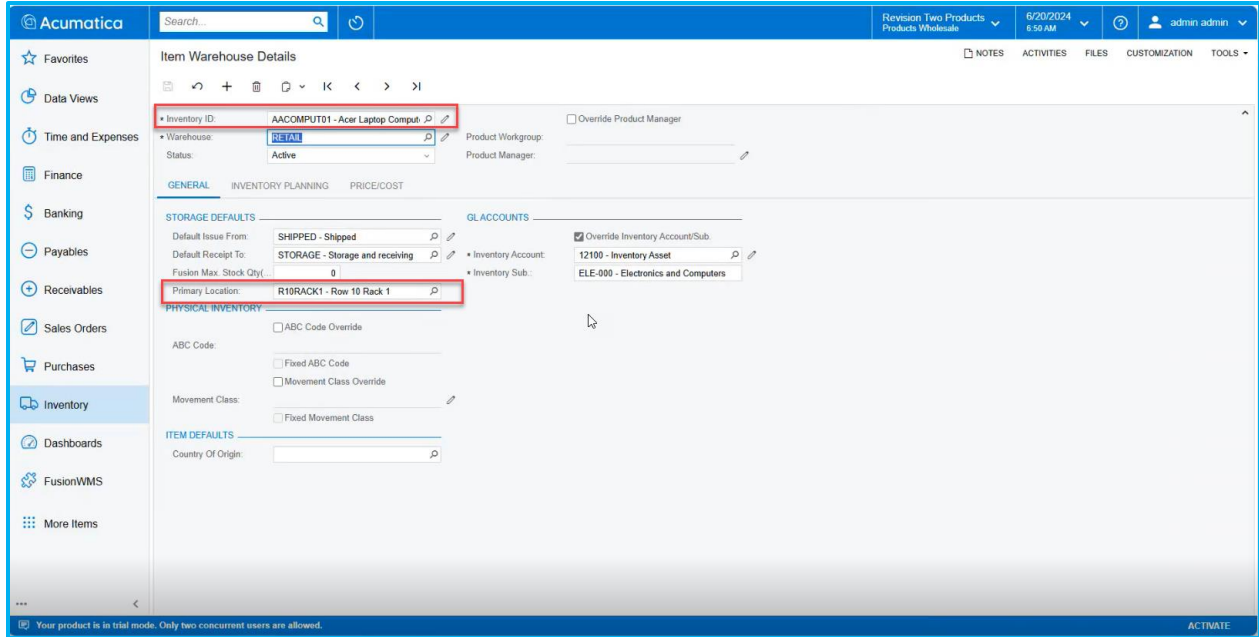


Figure: Primary Location against the Inventory ID

Now login to Handheld, and you can view the Putaway and the Transfer module.



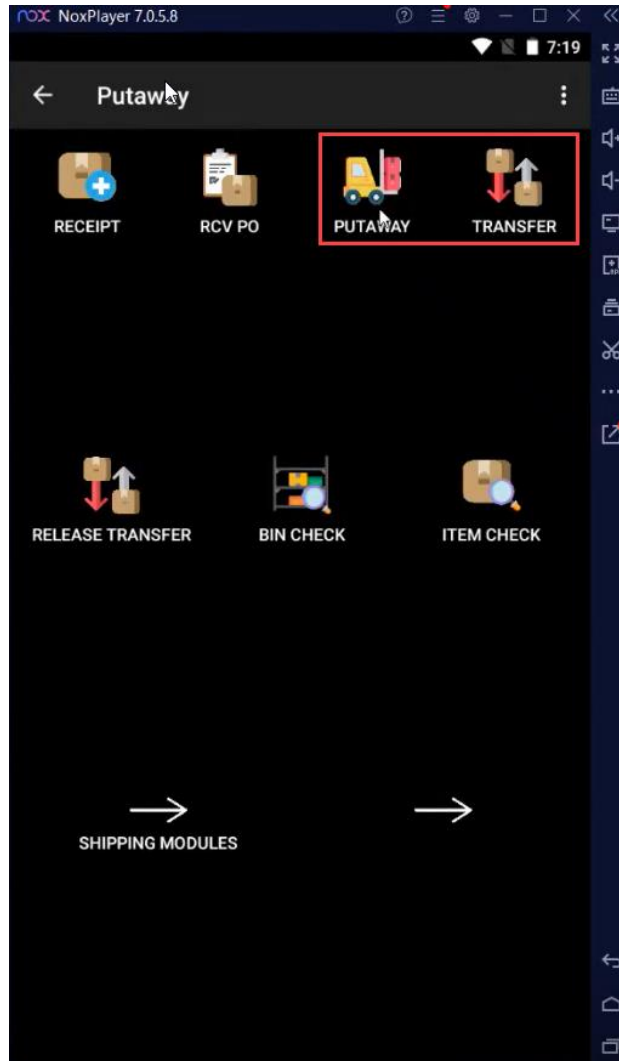
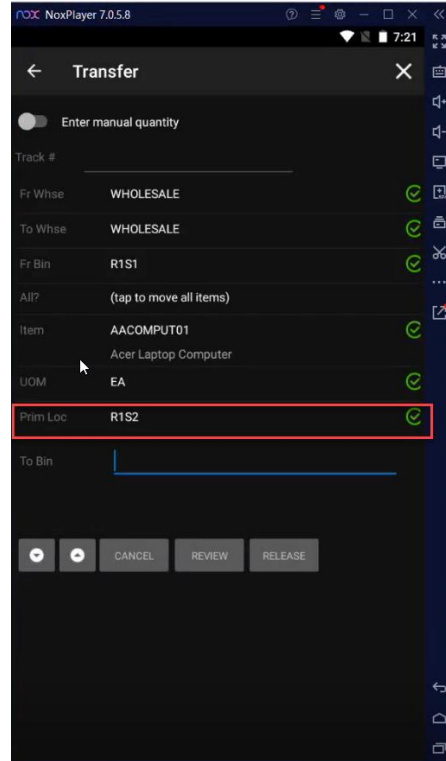
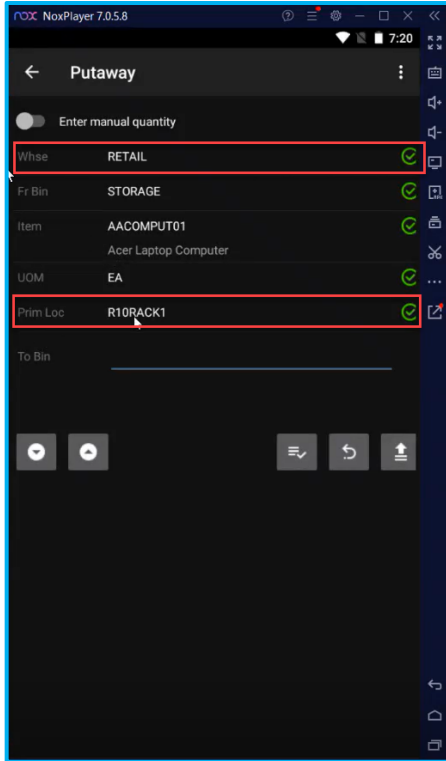


Figure: Putaway and Transfer module on Handheld

**Click on the [Putaway] module on the handheld, which will prompt you to enter the item name.**

**The handheld will show the warehouse and the Primary Location as shown below.**



## New field on the Container Screen

We have introduced a [Creation Date] and two UDFs on the Container Screen.

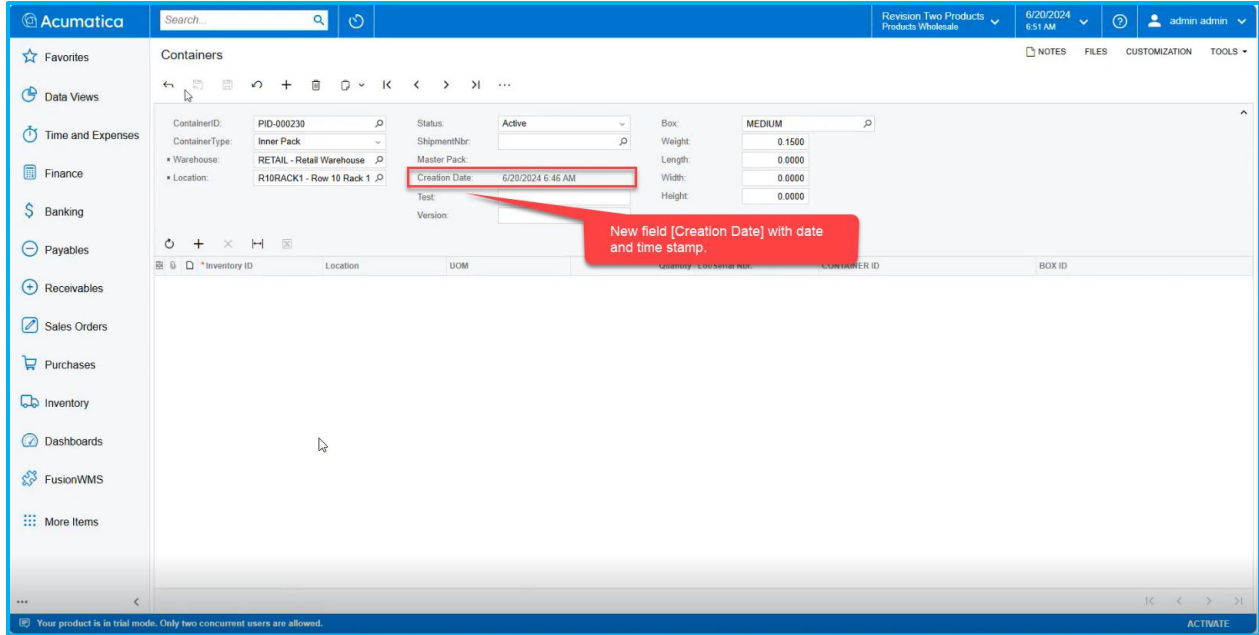
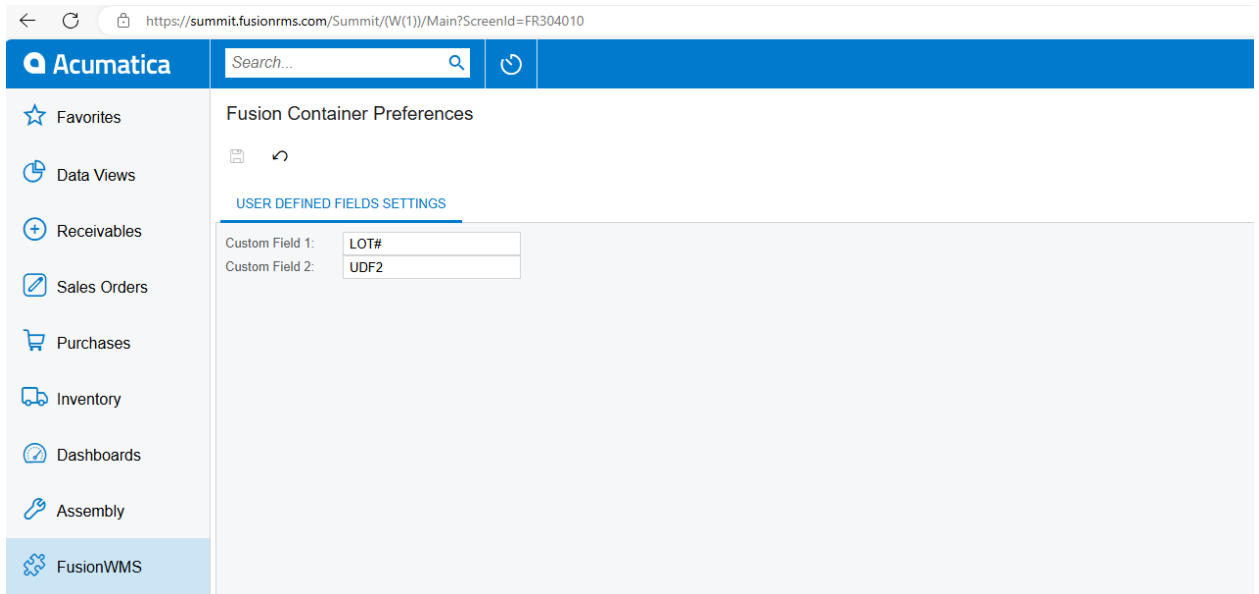


Figure: New field Creation Date with Time Stamp.

The two UDFs are defined in the FusionWMS module in Container Preferences



# Installation Changes

There are no installation changes included in this release.

## UI Changes

### Zone Picking checkbox on the Warehouse Screen removed

Previously, there was a checkbox labelled [Zone Picking] on the Warehouse screen. In this version, we have removed that checkbox.

Workspace	Screen	Entity
Warehouse	Warehouse screen	Zone Picking

### Fusion Sales Order Preferences moved

The Fusion Sales Order Preferences have been moved to Preferences under Fusion WMS. Previously it was under the [Transaction] which is now moved under [Preferences].

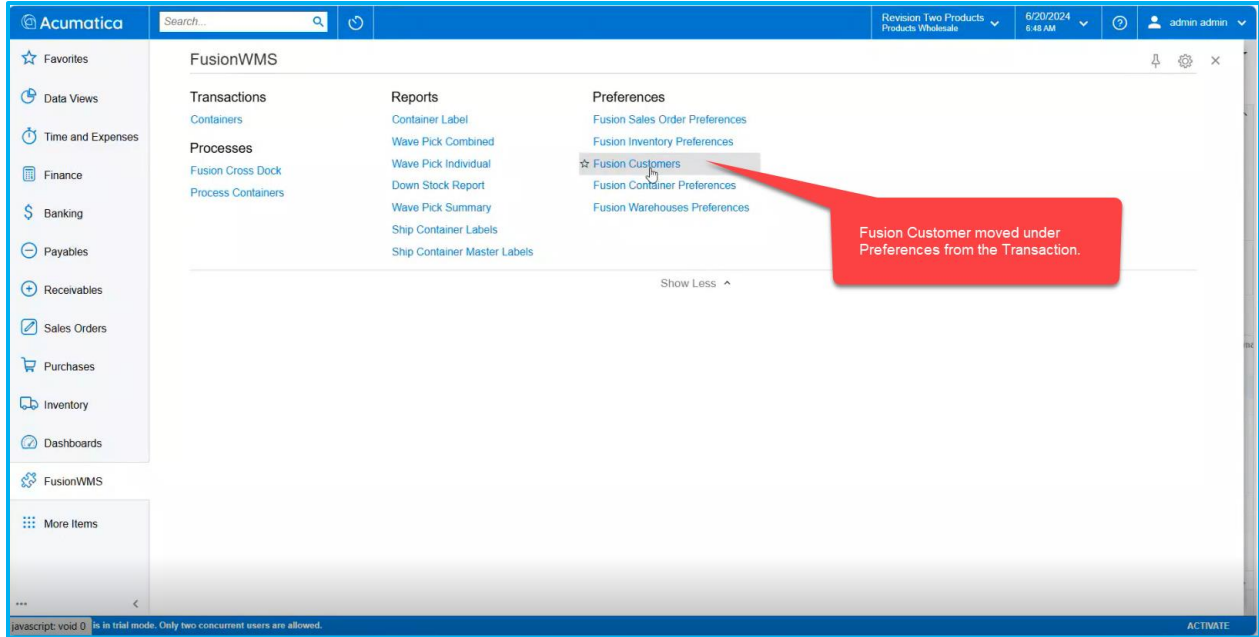


Figure: Fusion Customer moved under Preferences from Transactions

Workspace	Screen	Entity
Fusion WMS	Fusion WMS	Fusion Customer

## Known Bugs and Issues Fixes

- In the [Process Shipment] Screen we have a button [Optimize Shipment]. While selecting the [Optimize Shipment] selecting the records and passing it the application was throwing an error message.
- When creating a [Sales Order], generating a shipment, and completing the Pick Pack process, the application displayed both a container record and a transfer record. However, the transfer record showed a <New> reference number instead of the correct reference number.
- In Acumatica, on the [Transfer] screen, when we attempted to create and release a [Transfer], the application displayed an error message.

- On the [Shipment] screen, the Print Container Label option was previously missing. This option has now been added to the Shipment screen.
- When creating a Sales Order with a duplicate item, generating a shipment, and packing the shipment using the [Quickpack] screen, an error message is displayed on the Quickpack screen on the handheld when committing the shipment.